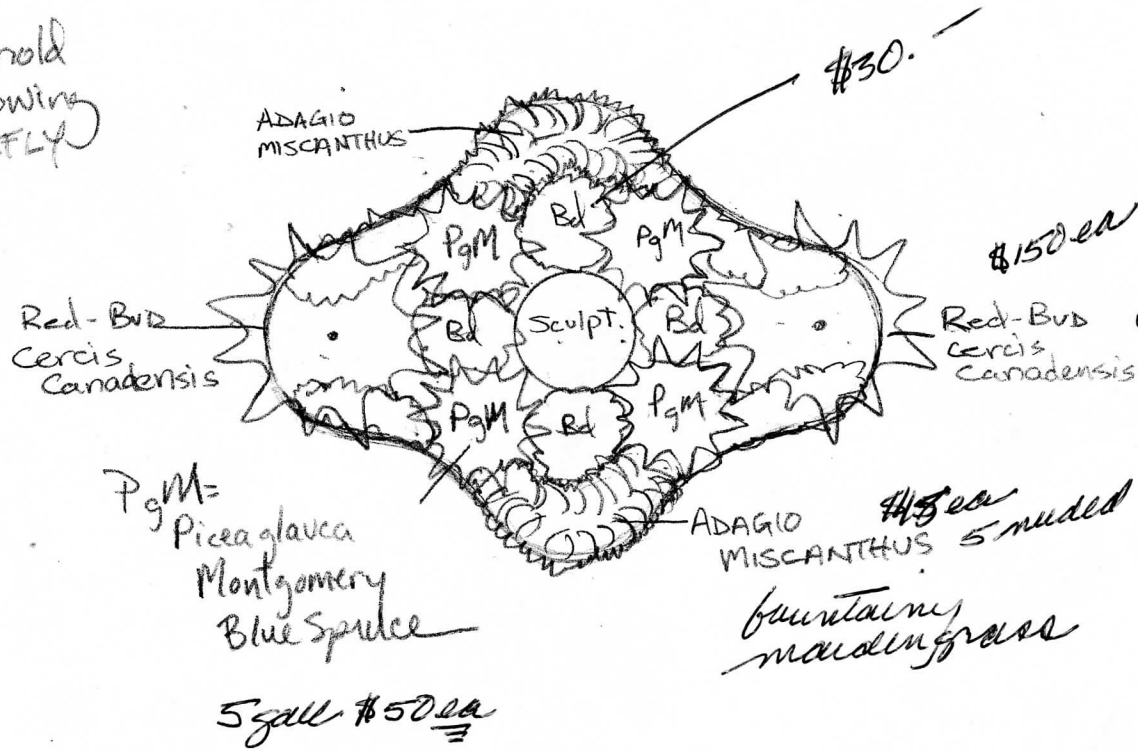


Step 1  
 paper mulch &  
 top w/ Compost -  
 top 10 yards?  
 Irene can do a  
 digital sketch

← 32 →

↕ 26 ↕

Bd - Lo-Behold  
 Low Growing  
 BUTTERFLY  
 Bush



or Japanese Lilac  
 Single Stem  
 trunk  
 18' x 15'  
 @ 20yrs

how about pumila nigra? dwarf Norway spruce

1" = 10'

2-3 ppl, 1 day

June La Comb - select &  
 recruit donor -

Circle is 40' diam